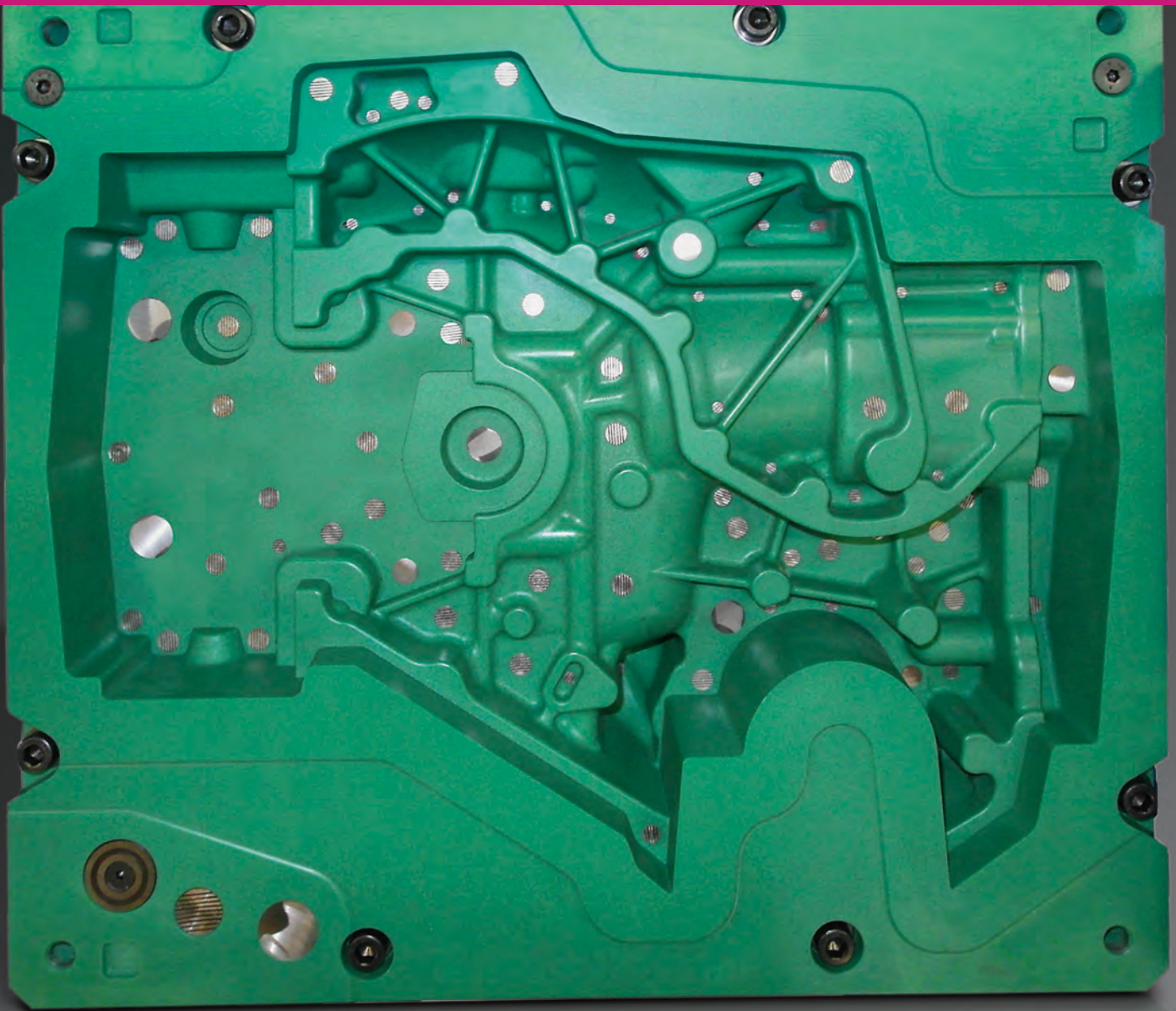


ebalta Product Overview.

High-performance Tooling Resins for Model and Mould Making.

Polyurethane and Epoxy Resins Boards and Blocks Silicones Auxiliaries



ebalta
Solution Takes Shape

Tooling resins mean the world to us. Your applications – our challenge!

As diverse as processes are, we offer the solutions for secure, reliable, flexible and efficient applications for foundry pattern making, design model making, mould and tool making as well as rapid prototyping and composites or electrical encapsulation. We understand the industry specific requirements and processes like no other. Whether for automotive industry, aerospace industry, wind energy, marine or machine building, we have a product range that shows the way.

Our experience for your leading knowledge. Consultation with best expertise.

We want to support our customers' capacity for innovation and competitiveness consistently. With a wide range of products, excellent consultation and service we will assist you at every stage of your project. Our experts for the various applications are always at your disposal, or just feel free to contact our distributors for an appointment in your premises.

Index

■ Board and block material

<i>ebaboard</i> – board material	4-5
<i>ebablock</i> ® – block material	4-5
<i>ebazell</i> – foam boards	4-5
Adhesives, repair putty and casting resins	5



■ Polyurethane casting resins

Polyurethane casting resins flexible	6
Polyurethane casting resins rigid	7
Casting foams	7
Fast casting resins unfilled / filled	8



■ Epoxy resins

General purpose and laminating resins	9
Epoxy casting resins	10



■ Gel coats

Epoxy gel coats	11
Polyurethane gel coats	11



■ Pastes

Laminating pastes	12
Reinforcing pastes	12
Coupling pastes	12
Modelling and lay-up pastes	12



■ Small series and prototpye resins

Prototype resins for RIM	13
Prototype resins for vacuum casting	13



■ Silicones

Silicones – addition curing	14
Silicones – condensation curing	14



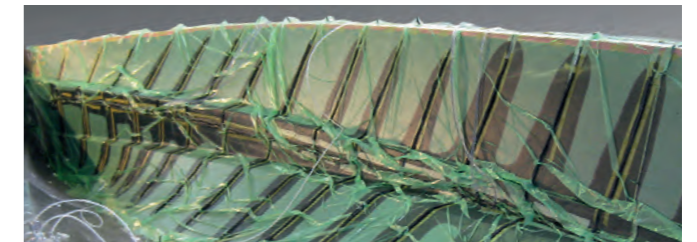
■ Casting systems for electrical encapsulation

PU-resins for electrical encapsulation	14
--	----



■ Additives and ancillary equipment

Ancillary materials for vacuum infusion	15
Fibre cloth and carbon fibre	15
Fast-curing polyester putty	15
Release agents	15
Mould sealers	15
Fillers	15
Synthetic gypsum	15
Wax sheets	15
Accessories	15



Board and block material

	Colour	Properties	Applications	Density [g/cm ³]	Linear thermal expansion coefficient [10 ⁻⁶ K] 20-50 °C	Temperature resistance Martens [°C]	Available sizes [mm]	Adhesive, repair putty and casting resins
ebaboard L-2	apricot	very fine structure, good edge stability, good compressive strength	master models, design models, laminating tools	0.45	approx. 65	67 ± 2	1500 x 500 x 50 / 75 / 100 / 200	Adhesive apricot
ebaboard 0600	brown	dense surface, fine structure, very easy to work	master models, design models, foundry patterns	0.60	approx. 59	73 ± 5	1500 x 500 x 30 / 50 / 75 / 100 / 150 / 200	Adhesive and repair putty brown
ebaboard 0700	brown	dense surface, very fine structure, very easy to work	master models, foundry patterns, design models	0.70	approx. 49	78 ± 3	1500 x 500 x 50 / 75 / 100 / 200	Adhesive and repair putty brown
ebaboard EP 138	light blue	low coefficient of thermal expansion, very high heat resistance	tools for prepregs, master models for prepreg-tools	0.68	approx. 36	145 ± 3	1524 x 609 x 50 / 75 / 100	Adhesive 552
ebaboard 0800	grey	very fine structure, high strength values, good edge stability, very low generation of dust during machining	master models, foundry patterns, laminating tools, design models	0.80	approx. 69	89 ± 2	1495 x 500 x 50 / 75 / 100 1490 x 500 x 150 / 200	Adhesive and repair putty light grey
ebablock® M 007	brown	dense surface, fine structure, very easy to work	cubing models, master models, design models, leathers models	0.82	approx. 67	68 ± 2	ebablock®: individual dimensions	Adhesive and repair putty brown
ebaboard 1050 ebablock® 1050	light grey	easy to work, fine structure, good heat resistance	foundry patterns, core boxes, jigs, vacuum forming tools	1.05	approx. 60	98 ± 3	1000 x 500 x 50 / 75 / 100, special sizes on request ebablock®: individual dimensions	Adhesive and repair putty light grey
ebaboard 1204 ebablock® 1204	yellow	high abrasion resistance, very good edge strength, very shock resistant, very dense surface, easy to work	core boxes, foundry patterns, pattern plates	1.20	approx. 77	87 ± 3	1500 x 500 x 50 / 75 / 100, special sizes on request ebablock®: individual dimensions	Adhesive, repair putty and casting resins yellow
ebaboard 1220 ebablock® 1220	orange	high abrasion resistance, dimensionally accurate	foundry patterns, core boxes pattern plates	1.21	approx. 73	82 ± 4	1000 x 500 x 50 / 75 / 100, special sizes on request ebablock®: individual dimensions	Adhesive and repair putty orange
ebaboard PW 920 ebablock® 920	green	high quality surface, abrasion resistant, good edge strength	foundry patterns, core boxes, pattern plates, low pressure RIM tools	1.22	approx. 87	80 ± 3	1000 x 500 x 50 / 75 / 100, special sizes on request ebablock®: individual dimensions	Adhesive, repair putty and casting resins green
ebaboard 1200	beige	low coefficient of linear expansion, good edge strength, high quality surface	gauges, fixtures, moulding tools	1.25	approx. 54	97 ± 3	1000 x 500 x 50 / 75 / 100, special sizes on request	Adhesive and repair putty beige
ebablock® K 08	salmon pink	very high abrasion resistance, very shock resistant, dense surface	core boxes	1.35	approx. 150	-	ebablock®: individual dimensions	Adhesive for ebablock® K 08
ebaboard 1400 ebablock® 1400	blue	low coefficient of linear expansion, high abrasion resistance, fine structure	foundry patterns, core boxes, pattern plates, low pressure RIM tools	1.38	approx. 69	87 ± 2	1000 x 500 x 50 / 75 / 100, special sizes on request ebablock®: individual dimensions	Adhesive, repair putty and casting resin blue
ebaboard 1700	grey	good heat resistance, low coefficient of linear expansion	jigs, moulding tools, vacuum forming tools	1.70	approx. 45	85 ± 2	1000 x 500 x 50 / 75 / 100, special sizes on request	Adhesive and repair putty grey
ebaboard 1750	beige	low coefficient of linear expansion, good edge strength	jigs, moulding tools	1.75	approx. 43	90 ± 3	1000 x 500 x 50 / 75 / 100, special sizes on request	Adhesive beige and repair putty beige
ebaboard W ebablock® W	grey	high strength, wear resistant, low coefficient of linear expansion	sheet metal forming, vacuum forming tools, jigs, mould constructions	1.76	approx. 50	76 ± 2	1000 x 500 x 50 / 75 / 100, special sizes on request ebablock®: individual dimensions	Adhesive and repair putty grey
ebablock® P 185	blue	low coefficient of linear expansion, high heat resistance	master models for prepreg- and nickel shell tools	1.86	approx. 39	115 ± 5	ebablock®: individual dimensions	Putty P 185 blue
ebazell 80	light beige	fine structure, very easy to work	styling models, master models, design models	0.08	approx. 50	-	2000 x 1250 x 50 / 100 / 150 / 200 / 300 / 400 special sizes on request	Adhesive for ebazell grey
ebazell 160	light green	very fine structure, very easy to work	master models, design models, arts and crafts	0.16	approx. 50	-	2000 x 1000 x 100 / 150 / 200 / 300 / 400 special sizes on request	Adhesive for ebazell grey
ebazell 260	light grey	very fine structure, very easy to work, dimensionally stable	master models, design models, arts and crafts	0.25	approx. 50	-	2000 x 1000 x 50 / 100 / 150 / 200 special sizes on request	Adhesive for ebazell grey

ebaboard – board material / ebablock® – block material

ebazell – foam boards

ebaboard – board material / ebablock® – block material

ebazell – foam boards

Polyurethane casting resins

Resin / Hardener	Properties + Applications				Mixing ratio p.b.w.	Special mixtures		
	Colour		Pot life approx. min.			Type	Properties	Mixing ratio
GM 900-1 A / B	black, beige	Shore A hardness 13, highly flexible, good tear propagation resistance	casting mould for gypsum, plastic, ceramic materials, wax	17-27	100 : 10	-	-	-
GM 951-1 A / B	black, beige	Shore A hardness 45, good tear propagation resistance, well castable	casting mould for gypsum, plastic, wax, ceramic materials cement, PU-foam, gaskets	17-27	100 : 10	-	-	-
GM 956 / GM 956-30	trans-parent	Shore A hardness 30, Shore hardness (flexibility) variable, excellent flow properties, odourless	prototypes with rubber-like properties, flexible parts	20-30	100 : 205	GM 956-45 45 Shore A	100 : 180	
						GM 956-60 60 Shore A	100 : 150	
						GM 956-70 70 Shore A	100 : 110	
						GM 956-80 83 Shore A	100 : 80	
GM 956-90 A / B	trans-parent	Shore A hardness 90, variable, excellent low properties, high tear strength, dourless	prototypes with rubber-like properties, flexible parts	18-22	100 : 125	-	-	-
GM 965-55 A / B	red	Shore A hardness 55, filled	casting moulds for ceramic, concrete, cement, gypsum	15-20	100 : 11	GM 965- 40 40 Shore A	100:11,5	
						GM 965-70 70 Shore A	100 : 15	
GM 968 A / B	red-brown	Shore A hardness 55, very low water absorption, excellent flow properties, good tear propagation resistance	casting moulds for ceramic, concrete, cement, gypsum, wax, plastic	25-35	100 : 80	-	-	-
GM 971-75 A / B	beige	Shore A hardness 78, well castable, high strength, cold flexible, easily dyeable, free of mercury	flexible parts, vacuum casting parts, casting mould for gypsum, casting mould for plastic, casting mould for wax, jigs, casting mould for Pu-foam	7-9	100 : 66	GM 971-85	86 Shore A	100 : 52
GM 973 A / B	beige, black	Shore A hardness 90, high tear strength, well castable, flexible, yeable	flexible parts, jigs	12-15	100 : 15	-	-	-
GM 984-1 A / B	reddish-transparent	Shore D hardness 65, long pot life, large volumes castable, high abrasion resistance	core boxes, jigs	30-45	100 : 130	-	-	-
GM 984-2 A / B	reddish-opaque	Shore D hardness 67, very good dimensional stability, high abrasion resistance	core boxes, jigs	17-20	100 : 130	-	-	-

Polyurethane casting resins flexible

Polyurethane casting resins

Resin / Hardener	Properties + Applications				Mixing ratio p.b.w.	Special mixtures		
	Colour		Pot life approx. min.			Type	Properties	Mixing ratio
GM 986-1 A / B	yellow-opaque	Shore D hardness 70, dimensionally stable at high temperatures, high abrasion resistance	foundry patterns, pattern plates	16-20	100 : 26	-	-	-
GM 987 A / B	orange-opaque	Shore D hardness 65, excellent abrasion resistance	foundry patterns, core boxes	14-17	100 : 21	-	-	-
GM 708 / PUR 4	brown	unfilled, slow curing	sheet metal forming, foundry patterns, negatives, jigs	45-60	100 : 75	-	-	-
GM 727 A / B	beige	well workable, thick castable, dimensionally accurate, heat resistant	jigs, pattern plates foundry patterns, control casting, negatives	25-35	100 : 22	-	-	-
GM 979 / PUR 1	green	wear resistant, good compressive strength, impact resistant, heat resistant, excellent dissolving of mould and core sand properties	foundry patterns, core boxes, pattern plates, negatives	25-35	100 : 25	-	-	-
GM 1914 S A / B	whitish	suitable for production of climbing holds according to EN 12572-3:2017, abrasion resistant, free of plasticizer, easily dyeable, contains > 40 % raw materials from renewable source	climbing holds	2-3	100 : 80	GM 1914 L	pot life 8-10 min.	100 : 80
PU 10 A / B	beige	density 100 g/l, fine structure, further densities on request	styling models, core material, base constructions, negatives	1-1.5	100 : 120	PU 20	Density 200 g/l	100 : 80
						PU 05	Density 50 g/l	100 : 160
PU 17W A / B	black	density 180 g/l, fine structure, viscoelastic	flexible slabstock foam parts, material for treads	1-1.5	100 : 50	-	-	-
PU 60 FR/ Pur 50	grey	B1 application possible, well workable, minimum flue gas emissions, good mechanics, self-extinguishing	insulation, lightweight panels, multi-layer constructions	-	100 : 75	-	-	-

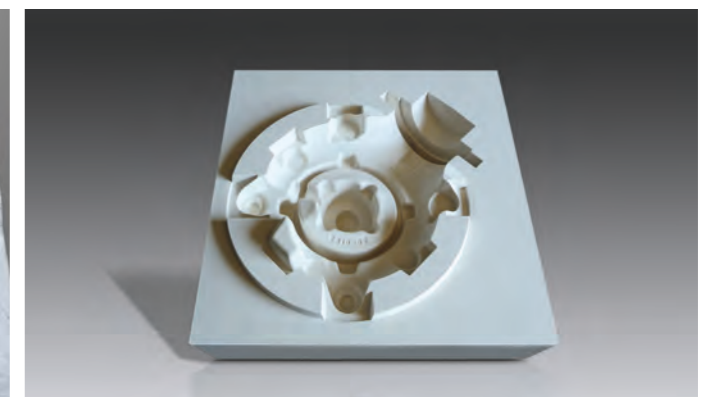
Polyurethane casting resins flexible

Polyurethane casting resins rigid

Casting foams



Cavity made with GM 965-55, concrete casting



Negative made with GM 727

Polyurethane casting resins

Resin / Hardener	Properties + Applications			Pot life approx. min.	Mixing ratio p.b.w.	Special mixtures		
	Colour					Type	Properties	Mixing ratio
SG 130 / PUR 11	ivory	unfilled, impact resistant, high strength	foundry patterns, core boxes, negatives, vacuum forming tools	2.5-3.5	100 : 100	SG 130 L	pot life 5-7 min.	100 : 100
						SG 131	pot life 9-15 min.	100 : 100
SG 197 A / B	ivory	unfilled, high impact strength, very well castable, low viscosity	prototypes, toys, decoration stuff	4-6	100 : 100	SG 198	pot life 2-3.5 min.	100 : 100
SG 2000 A / B	ivory	unfilled, very thin liquid, high filler content possible, good curing, very high strength, very heat resistant	foundry patterns, core boxes, negatives, control castings	2.5-3.5	100 : 100	SG 2000 S	pot life 1.5-2.5 min.	100 : 100
						SG 2000 L	pot life 7-8 min.	100 : 100
						SG 2015	pot life 14-18 min.	100 : 100
SG 700 / PUR 5	blue	filled, well castable, fine structure, dimensionally accurate, fast curing, versatile	foundry patterns, core boxes, jigs, negatives, control castings	5-6	100 : 15	SG 700 A	abrasion resistant, pot life 5-7 min.	100 : 15

Fast casting resins unfilled

Fast casting resins filled

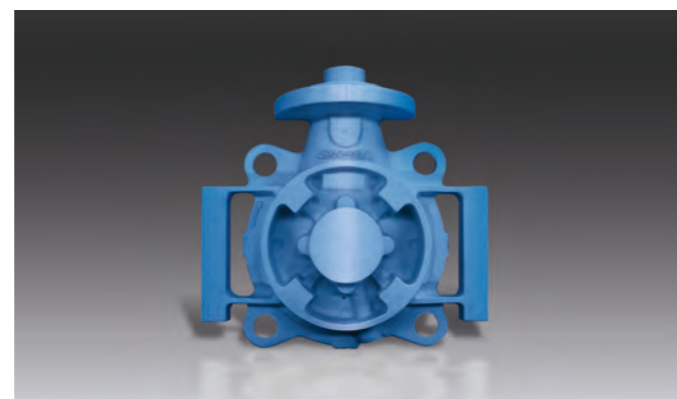
Epoxy resins

Resin / Hardener	Properties + Applications			Pot life approx. min.	Mixing ratio p.b.w.	Special mixtures		
	Colour					Type	Properties	Mixing ratio
AH 100 / TG	yellow transparent	unfilled, low cost, low viscosity	bonding resin for silica-sand-auxiliary negatives	40-50	100 : 20	D	high filler content possible	100 : 19
						GL	versatile	100 : 29
AH 110 / TL-1	yellow transparent	unfilled, high strength, high heat resistance up to 105 °C	laminating resin also for heavy fabrics / bonded fabrics, binding resin for fillers	85-95	100 : 25	TGL	good curing	100 : 22
						TGS	fast curing	100 : 22
AH 120 / TL-1	whitish transparent	unfilled, high heat resistance up to 100 °C, high strength	laminating resin also for heavy fabrics / bonded fabrics, vehicle construction	80-90	100 : 25	TGL	good curing	100 : 22
						LI 130-2	long pot life	100 : 35
AH 140 / TC 90-2	yellow transparent	very thin liquid, good curing at room temperature, high heat resistance up to 110 °C	hand laminating, vacuum injection, laminates for: boatbuilding, automotive industry	90-105	100 : 32	LI 20-1	cures tack free, high heat resistance	100 : 35
						LI 130-2		100 : 35
AH 150 / IP 55	opaque	very low viscosity, good fibre wetting, long flow paths, low price	boatbuilding, vehicle- and aircraft construction, parts and moulds	50-60	100 : 30	IP 25	potlife 15-25 min.	100 : 30
						IP 430	potlife 300-430 min.	100 : 30
LH 22 / GL	white	excellent dimensional accuracy, long pot life, low exothermic character	laminating moulds, checking gauges	40-45	100 : 25	-	-	-
LH 25 resin / hardener	white	flammability classification S 4, smoke emission class SR-2, drippability class ST-2	laminating parts for rail vehicles, boatbuilding	50-60	100 : 15	-	-	-
LH 28-1 / TM	brown transparent	high heat resistance up to 175 °C, long processing time, low exothermic character	vacuum forming tools, prepreg tools, vacuum injection, blow moulds, polyester injection moulds	240-360	100 : 40	-	-	-
LH 30 resin / hardener	brown transparent	low exothermic character, long processing time, very high heat resistance up to 181 °C	high temperature resistant laminating tools	160-200	100 : 42	-	-	-
IH 16 resin / hardener fast	opaque	very low viscosity, good wetting characteristics	infiltration of porous 3-D printed parts	50-60	100 : 30	hardener slow	long pot life	100 : 30

General purpose and laminating resins



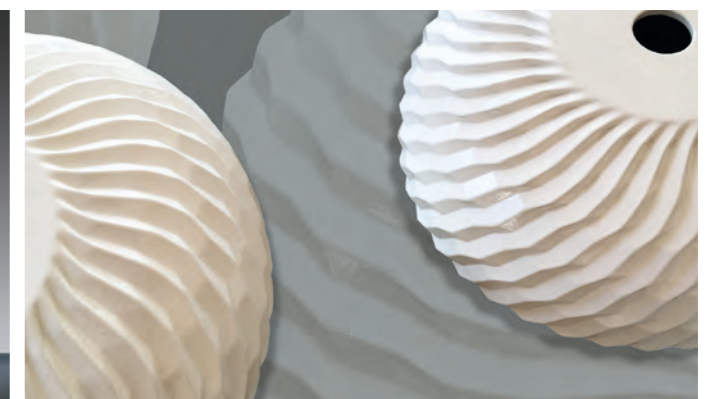
Pattern made with SG 130



Pattern made with SG 700 blue



Roding Roadster R1 made with AH 140

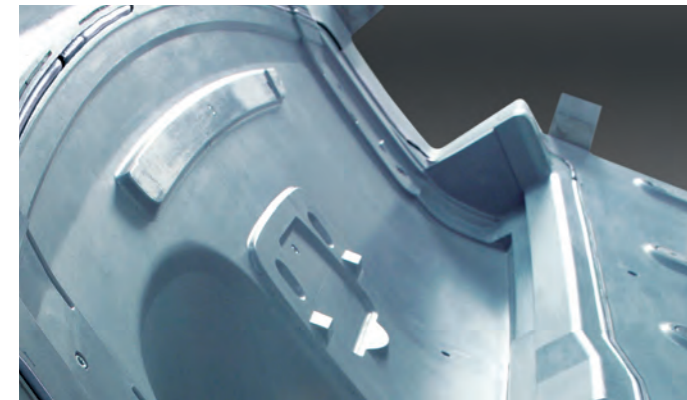


3D-printed sink infiltrated with ebalta resin IH 16

Epoxy resins

Epoxy casting resins

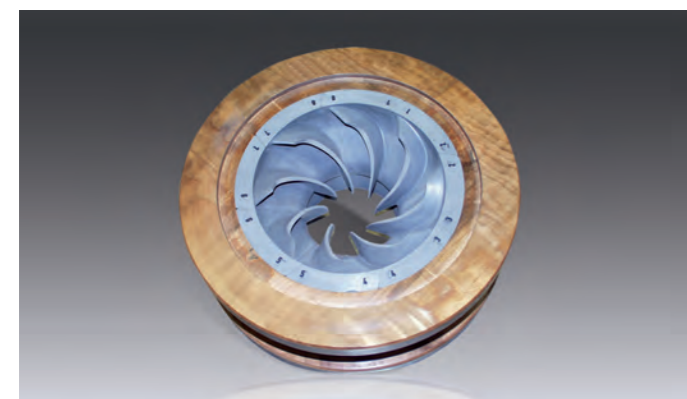
Resin / Hardener	Properties + Applications			Mixing ratio p.b.w.	Special mixtures			
	Colour		Pot life approx. min.		Type	Properties	Mixing ratio	
GH 705 / TL-1	alu-grey	high heat resistance, aluminium-like appearance	PU-foaming tools, RIM foaming tools, vacuum forming tools, heatable foundry patterns	65-75	100 : 10	LI 100-2	pot life 75-85 min.	100 : 12
GH 706 / GL	blue	abrasion resistant, fine structure, good compressive strength, very hard, wear resistant, well castable, castable up to 30 mm	foundry patterns, core boxes, pattern plates, copy milling models	30-40	100 : 10	-	-	-
GH 730 / BR	black	impact resistant, versatile	foundry patterns, core boxes, pattern plates, jigs	35-45	100 : 10	D GL	thin liquid longer pot life	100 : 5 100 : 8
GH 752 TL-1	alu-grey	heat resistant, very thick castable, well workable	Vacuum forming tools, PU-foaming tools, RIM foam tools, Heatable foundry patterns	60-70	100 : 7	LI 100-2	pot life 50-60 min.	100 : 9
GH 760 / GL	grey	dimensionally accurate, abrasion resistant, high strength, castable up to 40 mm, very good sliding properties	foundry patterns, core boxes, model boards, stretch tools	45-55	100 : 10	-	-	-



Foaming mould made with GH 705



Pattern made with GH 760



Core box made with GH 760



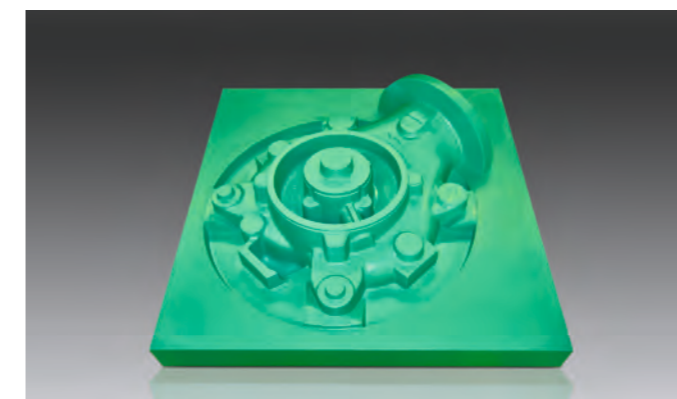
Pattern made with GH 760

Gel coats

Resin / Hardener	Properties + Applications			Mixing ratio p.b.w.	Special mixtures			
	Colour		Pot life approx. min.		Type	Properties	Mixing ratio	
OH 4 / H 2017	white	universal, very good spreadable, well grindable, impact resistant surface	negatives, master models, jigs, foundry patterns	20-25	100 : 13	-	-	-
OH 6-1 / H 2017	blue	fine structure, very abrasion resistant, very hard	foundry patterns, copy-milling models	40-50	100 : 9	-	-	-
OH 33 / H 2017	black	polishable, dense surface	RTM tools, hand lay-up models	20-25	100 : 15	-	-	-
OH 35 / H 2017	black	polishable, grindable, dense surface	PU-foaming tools, prepreg tools	20-25	100 : 14	-	-	-
OH 38 / H 2017	alu-grey	aluminium-like appearance, dense surface, polishable	vacuum forming tools, PU-foaming tools, prepreg tools	25-30	100 : 12	OH 38 / HM	HDT 145°C	100 : 13
OH 82 / TM	black	very low thermal expansion, very high heat resistance up to 175 °C, dimensionally accurate	prepreg tools, vacuum forming tools, high-temperature press tools	220-260	100 : 31	-	-	-
OH 11 / PUR 3	red oxide	abrasion resistant, impact resistant, excellent dissolving properties of mould and core sand, polyurethane base	foundry patterns, core boxes	20-25	100 : 40	OH 11 hard	very hard, abrasion resistant	100 : 30
OH 49-1 A / B	green	very abrasion resistant, hard flexible, Shore D hardness approx. 66	fixtures, pattern plates, foundry patterns, core boxes, hammer form tools	20-25	100 : 130	-	-	-

Epoxy gel coats

PU gel coats



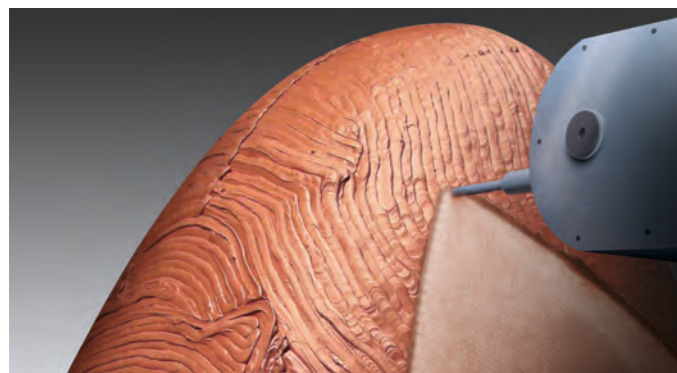
Pattern made with OH 49-1



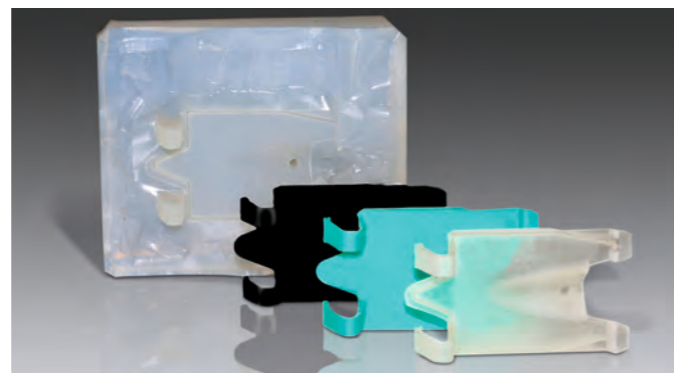
Application of gel coat OH 6-1

Pastes

	Resin / Hardener	Properties + Applications			Mixing ratio p.b.w.	Special mixtures		
	Colour		Pot life approx. min.	Type		Properties	Mixing ratio	
Laminating pastes	PS 02 / BRIL	blue, grey	glassfiber filled, soft	foundry patterns, core boxes, negatives	50-60	100 : 12	BRI	faster curing 100 : 12
	PS 03-1 / PS 03-1 L	blue, grey	glassfiber filled, heat resistant up to 68 °C	core boxes, negatives, foundry patterns	40-50	100 : 11	-	-
	PS 05/TL-1	grey	glassfiber filled, low shrinkage, heat resistant up to 105 °C	vacuum forming tools, PU-foaming tools, prepreg tools	50-60	100 : 13	-	-
Reinforcing pastes	PS 08 / TL-1	alu-grey	aluminium filled, glassfiber-filled, air permeable	bulking material for vacuum forming tools, and fixtures	45-60	100 : 3	-	-
Coupling pastes	KP 6 / TGL	grey	aluminium filled, heat resistant up to 100 °C	couplingpaste for EP gel coats	30-40	100 : 18	BR	couplingpaste for OH 49-1 and EP-back filling 100 : 26
	KP 7-1 / TM	grey	aluminium filled, heat resistant up to 175 °C	couplingpaste for OH 33, OH 35, OH 38, OH 82	240-360	100 : 32	-	-
	KP 8 A / B	grey	well spreadable, good bonding agent	couplingpaste for PU gel coats	20-25	100 : 28	-	-
	HV 55 / PUR 1	green	very good bonding on: steel, stainless steel, aluminium, flexible PU casting resins, wood	bonding agent and adhesive for elastic PU-resins	25-35	100 : 25	-	-
Modelling and lay-up pastes	P 22 resin / hardener	red, brown	good manual modelling, dimensionally accurate, very well workable, long processing time	master models for automotive, aircraft construction, industrial design	40-50	100 : 100	-	-
	P 26 resin / hardener	red, brown, light grey	modelling EP lay-up paste, density 0,75 g/cm ³ , 10-35 mm layer possible in one step, low exothermic character, dimensionally stable, very well workable, dense surface	design models	45-60	100 : 100	-	-
	P 28 resin / hardener	light grey	modelling EP lay-up paste, density 0,75 g/cm ³ , 10-25 mm layer thickness, high TG 100 °C, dimensionally stable, very easy to process, fine structure, fast curing in thin layers	master models and laminating molds for wind power, aircraft and boat construction	45-60	100 : 100	-	-



Milling of lay-up paste P 26



Silicone mould made of Silastic™ RTV-4234 T 4 with parts made of GM 956

Small series and prototype resins

	Resin / Hardener	Properties + Applications			Mixing ratio p.b.w.	Special mixtures		
	Colour		Pot life approx. min.	Type		Properties	Mixing ratio	
Prototype – resins for RIM	MG 321 FR-S A / B	black, nature	self-extinguishing according to UL 94 V0- and 5 VA, classification acc. to DIN 5510-2, for fire protection in rail vehicles	cladding parts EDP field and parts medical sector, vehicle construction	50-60 sec.	100 : 50	MG 321 FR	longer pot life 70-80 sec. 100 : 50
	MG 331 FR A / B	black	fire protection in rail vehicles acc. DIN EN 45545-2, classification R22 HL 1, HL 2, HL 3, classification R23 HL 1, HL 2, HL 3, high heat resistance HDT 120 °	production parts “listed” and “non-listed”, interior / exterior of rail vehicles, interior/ exterior equipment of buses, interior/exterior equipment of cable cars	55-60 sec.	100 : 45	-	-
	MG 425 / PUR 19	black	medium E-modulus, high impact resistance	functional, prototyping and cladding parts for automotive field and engineering	50-60 sec.	100 : 90	-	-
	MG 426 A / B	black	casting of big thicknesses possible	functional, prototyping and cladding parts for automotive field and engineering	150-160 sec.	100 : 100	-	-
	MG 453 A / B	black	high heat resistance, excellent flow properties	functional, prototyping and cladding parts for automotive field and engineering	55-60 sec.	100 : 75	MG 453 GF A / B	high rigidity, glass fiber reinforced 100 : 60
	MG 703 / Z 400	white	high impact strength, good flexural strength	high quality prototypes like PP / PE	8-12	100 : 31	MG 703 / Z 460	longer pot life 60 min. 100 : 31
	MG 707 / Z 400	white	high impact strength, good flexural strength, working temperature range from -40°C to 100 °C, long pot life, RoHS conform	high quality prototypes like PP/PE, vehicle construction, domestic articles, consumer goods	8-12	100 : 30	MG 707 / Z 460	longer pot life 60 min. 100 : 30
	MG 804 A / B	nature, black	long pot life, very well castable	high quality prototypes and small series, like ABS and PA	10-13	100 : 100	MG 804 / MG 804-1 MG 804 GF A / MG 804-1 B	higher HDT very high rigidity, glass fiber reinforced 100 : 100 100 : 50
	MG 807 FR A / B	beige	flame retardant according to UL 94-V0, well castable, long potlife, RoHS conform	high quality prototypes, like ABS	5-7	100 : 100	-	-
	MG 815 A / B	black	high temperature resistance, high impact resistance	high quality prototypes, like ABS and PA	5-7	100 : 70	MG 815 A / MG 815 FR B	flame retardant variation according to UL 94 V0 100 : 120

Prototype – resins for RIM

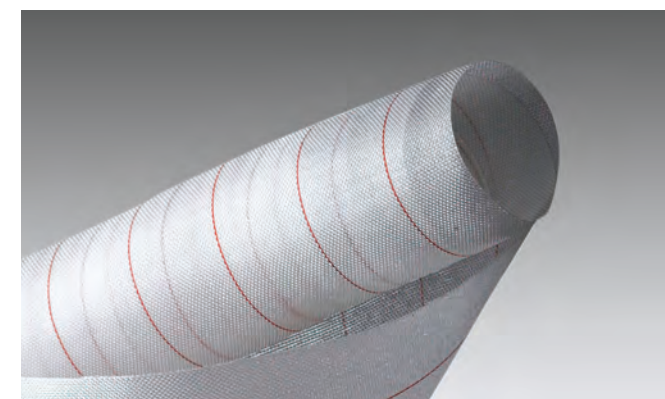
Prototype – resins for vacuum

Resin / Hardener	Properties + Applications			Mixing ratio p.b.w.	Special mixtures		
	Colour	Pot life approx. min.			Type	Properties	Mixing ratio
Silastic™ RTV-4250 S	green	very good tear strength, low viscosity, dry surface, 25 Shore A	elastic moulds, particularly suitable for glossy surfaces and clear resins	40-60	100 : 10	-	-
Silastic™ RTV-4131 P 1	white	very good tear strength, low viscosity, easy setting of hardness with silicone oil, 25 Shore A	pad printing, elastic moulds, gaskets and elastic parts	40-60	100 : 10	-	-
Silastic™ RTV-4234 T 4	translucent	translucent silicone, usable with retardant or accelerator, low shrinkage, 40 Shore A	vacuum casting moulds for prototypes and small batch series, moulds for wax and fine cast models	90	100 : 10	4234-T-4 0	oil bled
Silastic™ RTV-4136 M	blue	high hardness and temperature resistance, 59 Shore A	print pads for laminating vacuum bags and autoclaves, moulds for low-melting metal alloys	60	100 : 10	-	-

Silastic™ RTV-3120/ Silastic™ 3010 S	red brown	high hardness and excellent temperature resistance, 56 Shore A	moulds for low-melting metal alloys with small undercuts	60	100 : 10	-	-
Silastic™ RTV-3481/ Silastic™ RTV-3081	white	good flowability, potlife adjustable, 24 Shore A	moulding of arts/ crafts, figurines, rocks, skin-like mould, laminating moulds for polyester	90-120	100 : 5	3081-F 3081-VF 3081-R	fast very fast resin resistant
Silicon 25 / Curing Agent 25-24	white	non adhesive properties, high elasticity, highly detailed forming, excellent mechanical properties condensation curing	casting of art objects, casting of figurines, casting of rocks, casting or gelcoat, laminating, moulds for polyester, climbing holds	80-90	100 : 5	Curing Agent 25-6 Curing Agent 25-2 Curing Agent 25-R	fast very fast resin resistant
Thixo Additiv RTV-3011	transparent	for thickening addition and condensation linked silicones	for applications on vertical and overhead surfaces, manufacture of skin-like moulds	-	1-3 %	Primer 1200 OS	Bonding agent for metallic substrate-surfaces

EGM PU 02	red	unfilled, temperature range -30 - 115°C	electrical encapsulation, e.g. condensers, transformers	120	100 : 55	-	-
EGM PU 21	grey	UL 94-V0 classification	electrical encapsulation, e.g. condensers, transformers	60	100 : 30	EGM PU 21/30	Pot life 30 min, concrete – like grey
EGM PU 23	red brown	long term heat resistance up to 115°C, flame retardant	electrical encapsulation	157	100 : 10	-	-

Glass and carbon fibres		Release agents		Fillers	
Chopped glass strands	length of fibres 6 mm	T 1-1	liquid, fast drying, polishable, also available as spray	Light fillers, filler F-A, F-B, F-alu, F-iron, F-G, MF-paste, alu-granules, alu-powder, slate powder, plastic granules, Thixo 200, Thixo 01, cotton flocks, steel powder	
Glass filament fabrics	163 g/m², 290 g/m², 445 g/m², 600 g/m²	T 2	pasty, soft, polishable	Synthetic gypsum	
Carbon fibres	245 g/m²	T 03-01	liquid, heatresistant up to 100 °C	ebacryl Laminating-System, Ludur XL	
Polyester fillers		T 7	pasty, well polishable, resistant up to 80 °C	Wax sheets	
Fast curing modelpaste	brown, very easy processing and grinding	T 17	semi-permanent, high-temperature resistant	Special sheets 130 °C	light brown, 305 x 610 mm, self adhesive, smooth, 0.25-7 mm
ebalta-lastic	grey, high filling properties, very easy processing and grinding	Honey Wax	very well polishable	Standard sheets 64 °C	lemon yellow, 305 x 610 mm, self adhesive, soft, 1-6 mm
ebalta-plast	white or mahogany, very dense structure, free of pores	1711	spray, , contains silicone, heat resistant up to 125 °C	Ancillary materials for vacuum infusion	
ebalta-soft	beige	PTFE	spray, contains teflon, non-sticking, heat and chemical resistant	Consumer materials for composites and vacuum injection	
Repair-paste	silver coloured, heat resistant, for repairs of metal or plastic	PVA	liquid, builds a shiny heat and chemical resistant film, removable with water	Accessories	
Fibre-polyester	contains glass fibres, reinforcing	Mould sealers		PU-colour pastes	red, blue, green, yellow, white, black, brown
Polyester liquid	unfilled, addition of various fillers possible	Sealer 02 Sealer 09	Sealer for EP and PU boards	Additives and ancillary equipment	ebaclean, Superplastiline, brushes, mixing pots, instant adhesives, spray adhesive, hand cream, gloves, taps, container, stirrer, ebasafe: fixing systems for foundry patterns
		Pore sealer	liquid, fast drying, sandable and sprayable, seals rough surfaces such as wood or gypsum		



Peel ply fabric



Brushes, spiral and star-shaped mixer, available in different sizes

Our international distributors

Argentina

NOVARCHEM S.A.
Gral. Lavalle 5168,
Villa Martelli (1603),
Buenos Aires
Phone +54 11 47 09 75 85
E-Mail info@novarchem.com.ar

Australia

LMW Products & Services
PO Box 1255
Mitcham North
Victoria 3132
Phone +61 4 03 53 52 97
E-Mail wolfgang@lmwproducts.com.au

Austria / Croatia / Slovenia

FDW Handelsges. m.b.H.
8940 Liezen/Stmk.
Phone +43 3 61 22 55 75
E-Mail info@fdw.at

Bulgaria

Hofmann Consult Bulgaria EOOD
Okolovrasten pat 66, 1415 Sofia
Phone +359 2 9 60 90 10
E-Mail office@hofmannconsult.net

Czech Republic

KTk Blansko, spol s r.o.
67907 Kotvrdovice 277
Phone +42 0 51 64 43 57 3
E-Mail trubackova@ebalta.cz

France

Bodo Möller Chemie France SAS
69250 Neuville Sur Saone
Phone +33 4 78 98 23 37
E-Mail m.sempere@bm-chemie.fr

Delta Résines

77950 Montereau Sur Le Jard
Mobile +33 6 01 35 30 32
E-Mail delta.resines@orange.fr

India

Electrocoating & Insulation Technologies Pvt.Ltd.
Hinjawadi, Pune 411057
Cell +91 99 22 566 234
E-Mail pawar.electrocoating@gmail.com

Indonesia

PT. TRIPURI MITRA NOBELINDO
Jakarta 11520
Phone +62 21 58 05 90 6
E-Mail samudra@tripuri.co.id

Italy

CAME S.r.l
Chemical and Mineral Engineering
Via Lepetit, 40, 20020 Lainate (MI)
Phone +39 02 96 44 65 20
E-Mail info@comesrl.eu

Roman Nello di Bocca

R. & Roman D. & C S.A.S.
C.so Novara 60/c
27029 Vigevano (PV)
Phone +39 0 38 12 38 53
E-Mail info@romanello.it
Area: shoe industry

The Netherlands

James Kunststof
7213 VW Gorssel
Phone +31 629 015 844
E-Mail paz35@hetnet.nl

Norway

Hans Claussen AS
Skuiveien 41
1339 Vøyenenga
Phone +47 671 19 400
E-Mail jonas.claussen@hc-as.no

People's Republic of China

**Shanghai Rocsky Trading Co. Ltd.
Electronic Equipment Co.Ltd.**
Shanghai 201612
Phone +86 21 64 78 95 85
E-Mail groundjun@aliyun.com

Poland

Prec-Odlew Sp. z o.o.
32-050 Skawina
Phone +48 1 22 76 49 95
E-Mail prec@odlew.com.pl

Spain / Portugal

UNECO S.A.
C/ Franca 40-42
Pol. Ind. Rosanes
08769 Castellvi de Rosanes
(Barcelona) - SPAIN
Phone +34 93 3 83 47 11 / F. +34 93 398 41 31
E-Mail uneco@uneco.es

Sweden

ABIC Kemi AB
60006 Norrköping
Phone +46 11 14 90 30
E-Mail info@abic.se

Switzerland

Langer AG
4105 Biel-Benken
Phone +41 61 4 82 34 32
E-Mail info@langerag.ch

Tunisia / Algeria

ADCHEM
Advanced Chemistry S.A.R.L.
Immeuble Anbar N° 168 Avenue de Kouwait
Hammemet – 8050 Tunis
Tunisia
Phone +2 16 93 61 90 19
E-Mail business.manager@advanced-chemistry.com

Turkey

Epoks Kimyevi Ürünler San. Tic. Ltd. Sti.
34212 Günesli / Bağcılar-İSTANBUL
Phone +90 21 24 74 87 48
E-Mail volkan@epoks.com.tr

United Kingdom

ebalta Distribution Limited
Arundel, West Sussex, BN18 OHY
Phone +44 77 85 57 36 12
E-Mail info@ebaltadistribution.co.uk

ebalta Kunststoff GmbH
Erlbacher Straße 100
91541 Rothenburg ob der Tauber
Germany

Phone: +49 9861 7007-0
Fax : +49 9861 7007-7
info@ebalta.com
www.ebalta.com

Download product overview

